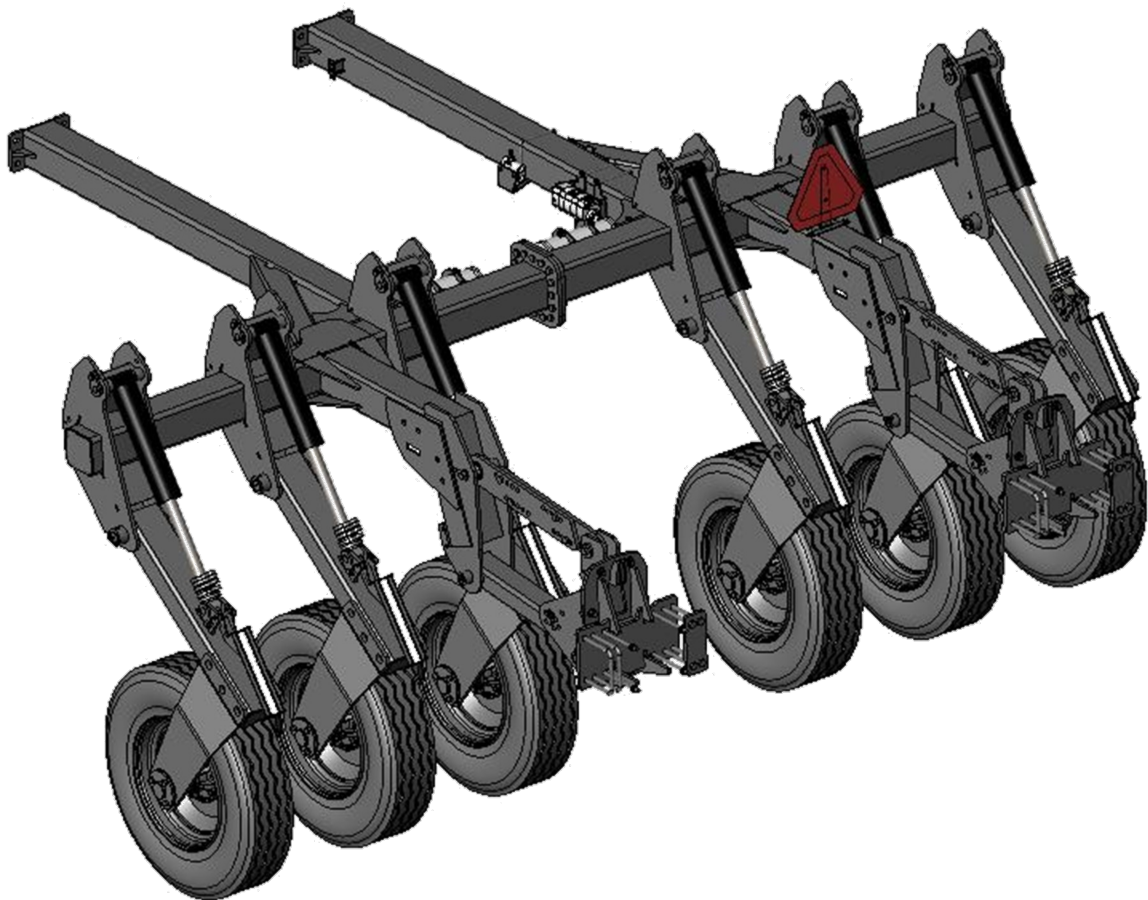




# Planter Caddy Operators Manual



**For Planter Caddy and Parts after 2014**

# **PLANTER CADDY**

## **PARTS BOOK**

This manual is applicable to all models of the  
Planter Caddy Series after 2014.

For inquiries call or write to:  
Schlagel Manufacturing, Inc.  
4154 Buttermilk Road  
Torrington, WY 82240

Toll Free: 888-889-1504  
Phone: 307-532-4451  
Fax: 307-532-8994

E-mail: [sales@schlagel.net](mailto:sales@schlagel.net)  
Website: [www.schlagel.net](http://www.schlagel.net)

## GENERAL INFORMATION

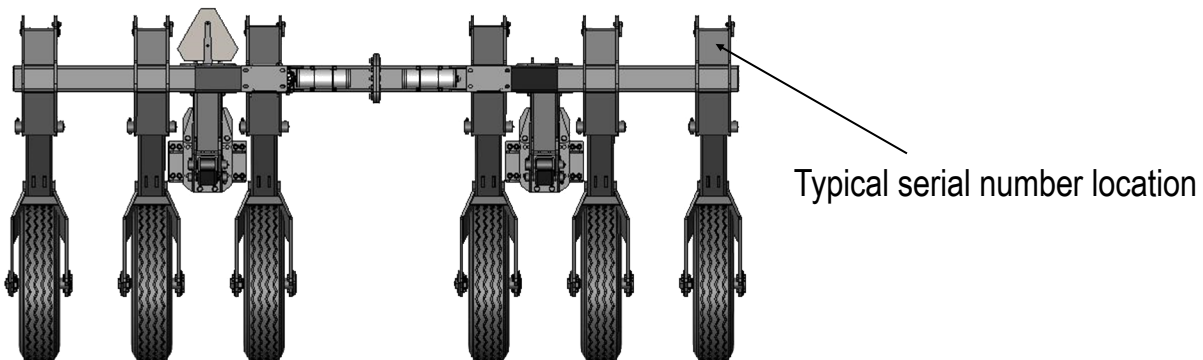
The photos and drawings in this manual may differ slightly from your machine due to design changes. The manufacturer reserves the right to change the design of the machine at any time without notifying the customer.

## SERIAL NUMBER AND DECAL LOCATION

It is important to have access to your machine's serial number and keep it on record at all times. The serial number decal on Planter Caddy machine is located on the outer lift wheel cylinder mount (left side if standing behind the unit). This decal also includes the machine's model number. We recommend the serial & model numbers be written in this manual in the spaces below. Should your sticker become damaged and/or unable to read, you can obtain a new one by sending us your machine's model and serial numbers and a return address.

Having your model and serial number ready when ordering replacement parts will help avoid confusion and assure that you get the correct parts.

Serial Number: \_\_\_\_\_ Model Number: \_\_\_\_\_



## WARRANTY

All new Planter Caddy machines come with a one year warranty. This warranty covers all non-wear parts for one year from the date of purchase. Any labor needed for repairs will not be covered unless labor is provided by a Schlager Manufacturing employee or is pre-approved by Schlager Manufacturing. If warranty parts or repairs are needed, please contact Schlager Manufacturing or your local dealer with your Planter Caddy serial and model number along with the warranty authorization sheet included at the back of this manual. Warranty parts and repairs will not be authorized for any part that has been misused, abused, or failed because routine maintenance as specified in this manual was not performed.

# SAFETY FIRST!



Watch for this symbol throughout this manual. The information that follows this symbol requires your attention and involves your safety!!!

- **Always disengage all drives, lower machine, put tractor in park, and shut off engine before performing any maintenance or repairs on your machine.**

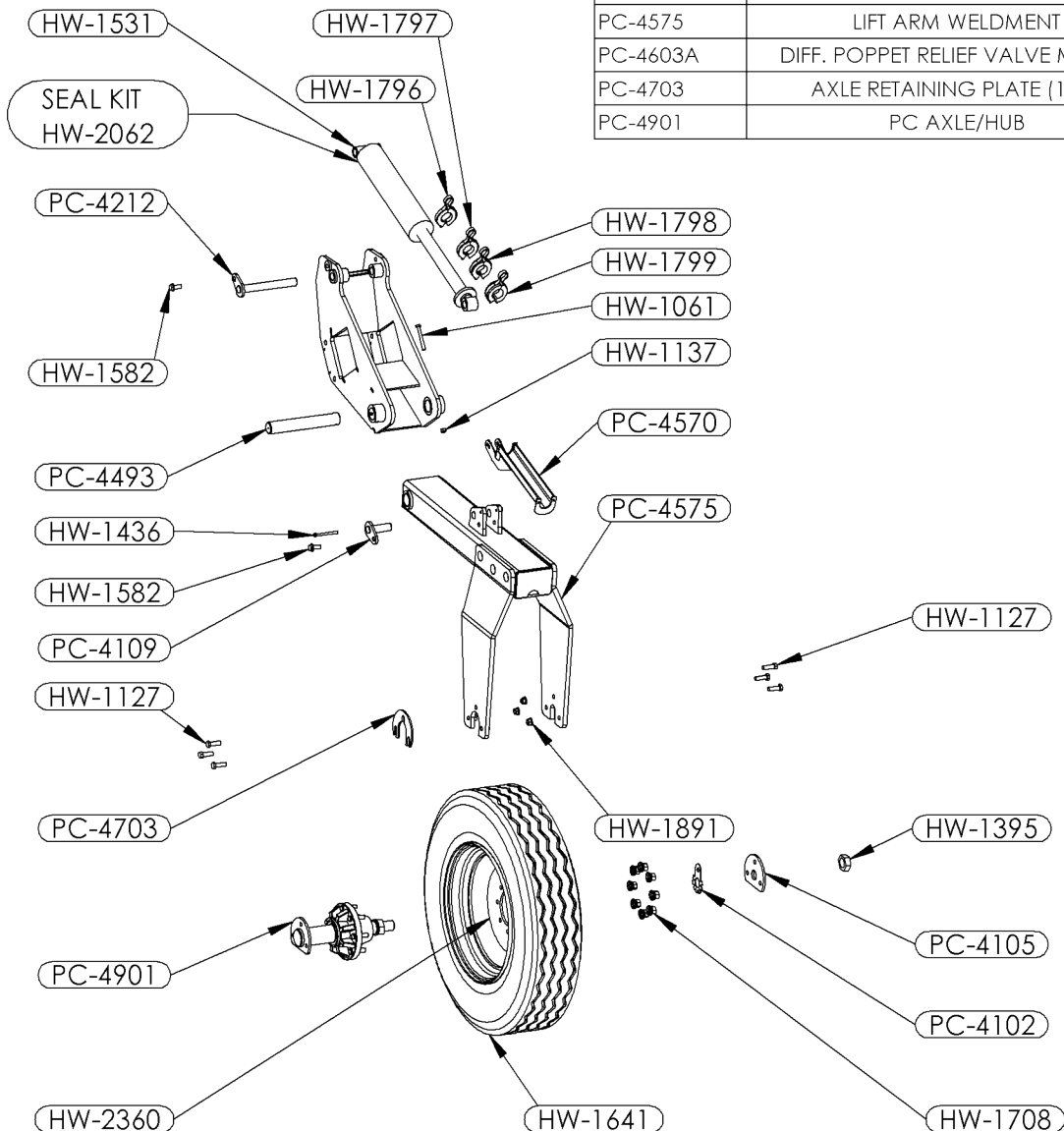
**This includes but is not limited to:**

- **Lubricating**
  - **Making Adjustments**
  - **Repair Work**
  - **Filling Tanks**
  - **Machine Inspection**
  - **Replacing Parts**
- 
- **Keep hands and feet away from any moving parts at all times.**
  - **Never crawl under the machine without the bar stands in place.**
  - **Always wear safety glasses and other protective wear as needed when performing any adjustment or maintenance.**
  - **Always watch overhead for power lines and other structures when raising/folding/unfolding any piece of equipment.**
  - **THINK AHEAD... Before doing any maintenance, preview what needs to be done and think about the best & safest way to do the job.**
  - **If at any time you have questions about the machine, setting the machine, safety issues, repair issues, or any other inquiry, don't hesitate to call us. Our toll free phone number is 1-888-889-1504.**



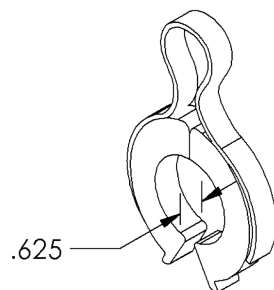
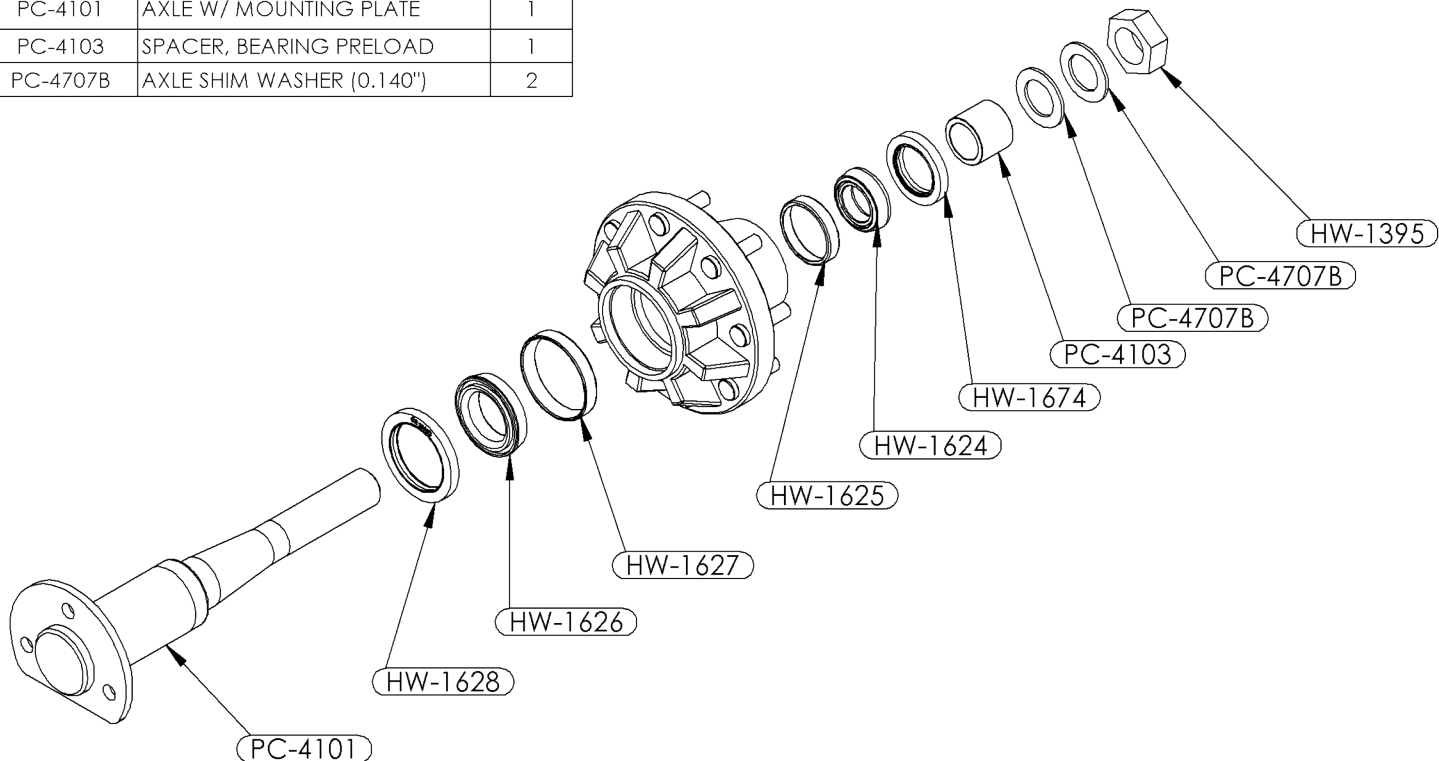
## PC WHEEL ARM

PART NUMBER	DESCRIPTION	QTY.	PART NUMBER	DESCRIPTION	QTY.
HW-1061	1/2"-13 X 4" GR5 ZF HCS	1	HW-1798	1" CYLINDER STOP	4
HW-1127	5/8"-11 " X 2" GR5 ZF HCS	6	HW-1799	1 - 1/4" CYLINDER STOP	4
HW-1137	1/2"-13 GR2 ZF NYLON INSERT LN	1	HW-1891	5/8"-11 ZF SERRATED FN	6
HW-1155	3/8"-16 GR2 ZF NYLON INSERT LN	1	HW-1999	FLOW DIVIDER	1
HW-1395	1-5/8"-12 GrA PF STEEL JAM NUT	1	HW-2066	RELIEF VALVE, DIFF POP, SAE 12	1
HW-1436	3/8"-16 X 4" GR5 ZF HCS	1	HW-2360	PC4 WHEEL 11X22.5	1
HW-1531	4" X 16" CYLINDER, CADDY-SPECIFIC	1	PC-4102	NUT LOCKING PLATE	1
HW-1582	5/8"-11 X 1-1/2" HH ZF SS FB	8	PC-4105	AXLE RETAINING PLATE	1
HW-1641	TIRE, 11R22.5	1	PC-4109	CYL PIN ROD END	1
HW-1659	ZERK, 1/8" PIPE, STRAIGHT	8	PC-4212	CYLINDER PIN	1
HW-1708	LUG NUT , HEAVY FLANGED, 75-8 HUB	8	PC-4493	LIFT FRAME PIVOT PIN	1
HW-1796	5/8" CYLINDER STOP	4	PC-4538A	REAR PC PLANTER BR MNT ASSY, STD	2
HW-1797	3/4" CYLINDER STOP	4	PC-4539	DELTA POWER FLOW DIVIDER MOUNT BRACKET	2
			PC-4570	CYLINDER STOP WELDMENT	1
			PC-4575	LIFT ARM WELDMENT	1
			PC-4603A	DIFF. POPPET RELIEF VALVE MOUNT	1
			PC-4703	AXLE RETAINING PLATE (1/4")	1
			PC-4901	PC AXLE/HUB	1

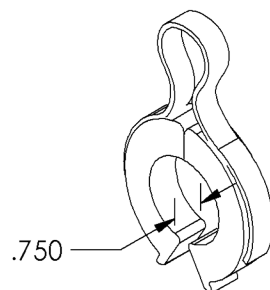


## PC-4901

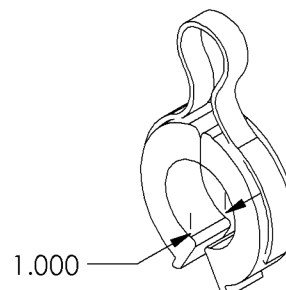
PART NUMBER	DESCRIPTION	QTY.
HW-1395	1-5/8"-12 GrA PF STEEL JAM NUT	1
HW-1624	SMALL OUTER BEARING	1
HW-1625	SMALL BEARING RACE	1
HW-1626	LARGE INNER BEARING	1
HW-1627	LARGE INNER RACE	1
HW-1628	SEAL, 3" SHAFT	1
HW-1674	SEAL, 2.125" SHAFT	1
PC-4101	AXLE W/ MOUNTING PLATE	1
PC-4103	SPACER, BEARING PRELOAD	1
PC-4707B	AXLE SHIM WASHER (0.140")	2



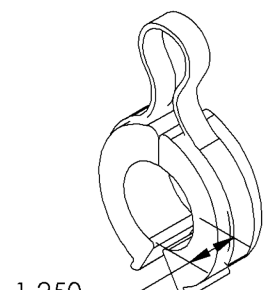
HW-1796  
5/8" SPACER



HW-1796  
3/4" SPACER



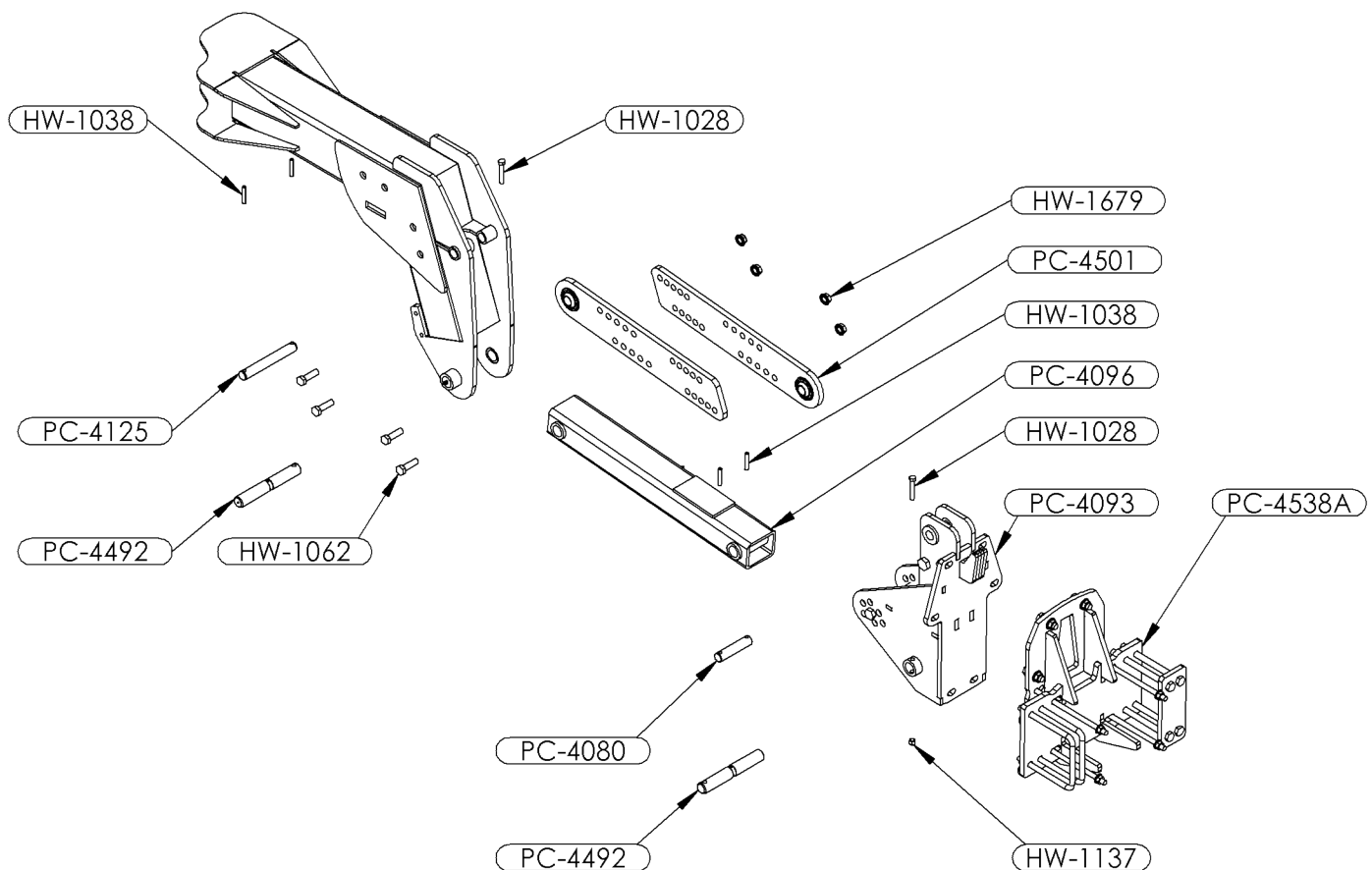
HW-1796  
1" SPACER



HW-1799  
1-1/4" SPACER

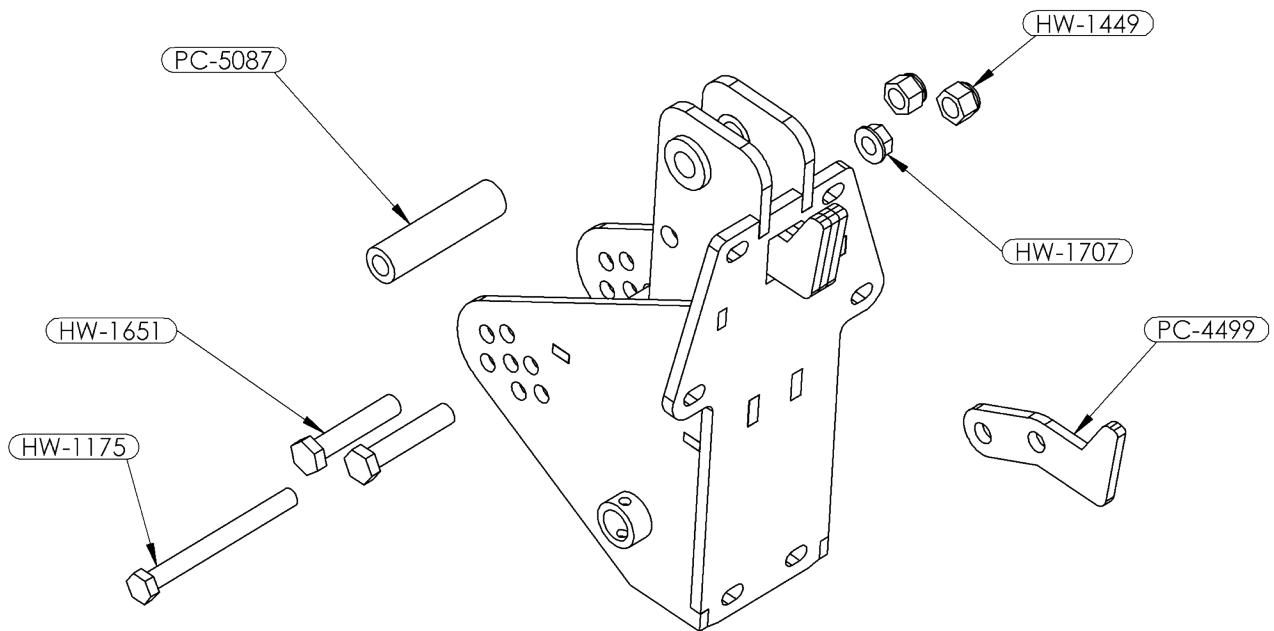
## PC LIFT ARM

PART NUMBER	DESCRIPTION	QTY.
HW-1028	1/2"-13 X 3" GR5 ZF HCS	2
HW-1038	7/16" X 2 1/2" ROLL PIN	4
HW-1062	3/4"-10 X 2-1/2" GR5 ZF HCS	4
HW-1137	1/2"-13 GR2 ZF NYLON INSERT LN	2
HW-1582	5/8"-11 X 1-1/2" HH ZF SS FB	6
HW-1659	ZERK, 1/8" PIPE, STRAIGHT	7
HW-1679	3/4" NC NUT, SERRATED FLANGE	4
PC-4080	PIN, REAR LEVELING ARM PIVOT	1
PC-4093	REAR PARALLEL ARM BRACKET	1
PC-4096	WELDMENT: REAR LOWER PARALLEL ARM	1
PC-4125	PIN, FRONT LEVELING ARM PIVOT	1
PC-4212	CYLINDER PIN	1
PC-4492	PIN, LOWER PARALLEL ARM PIVOT	2
PC-4501	WELDMENT: LEVELING ADJUSTMENT ARM	2
PC-4538A	REAR PC PLANTER BR MNT ASSY, STD	2
PC-4570	CYLINDER STOP WELDMENT	4



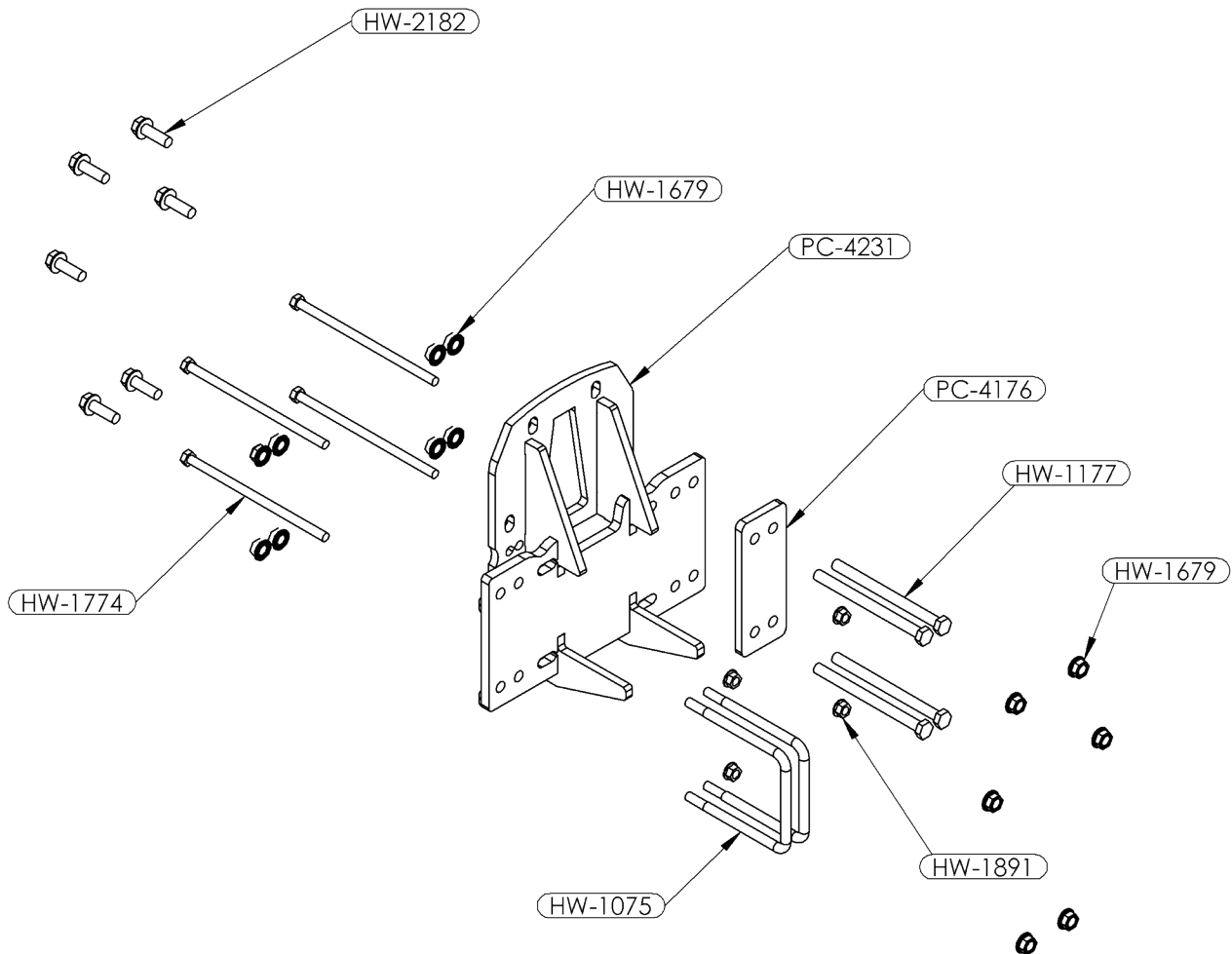
## PC-4093

PART NUMBER	DESCRIPTION	QTY.
HW-1175	7/8"-9 X 9" GR5 ZF HCS	1
HW-1193	WELD-IN BUSHING 3PT, 1.25" X 5/8" STEP	2
HW-1449	1"-8 Gr2 ZF NYLON INSERT LN	2
HW-1651	1"-8 X 5" GR5 ZF HCS	2
HW-1707	7/8" NC NUT, NON-SERRATED FLANGE	1
PC-4499	HOOK, (ANGLED BOLT PATTERN)	4
PC-5087	STOP BLOCK	1



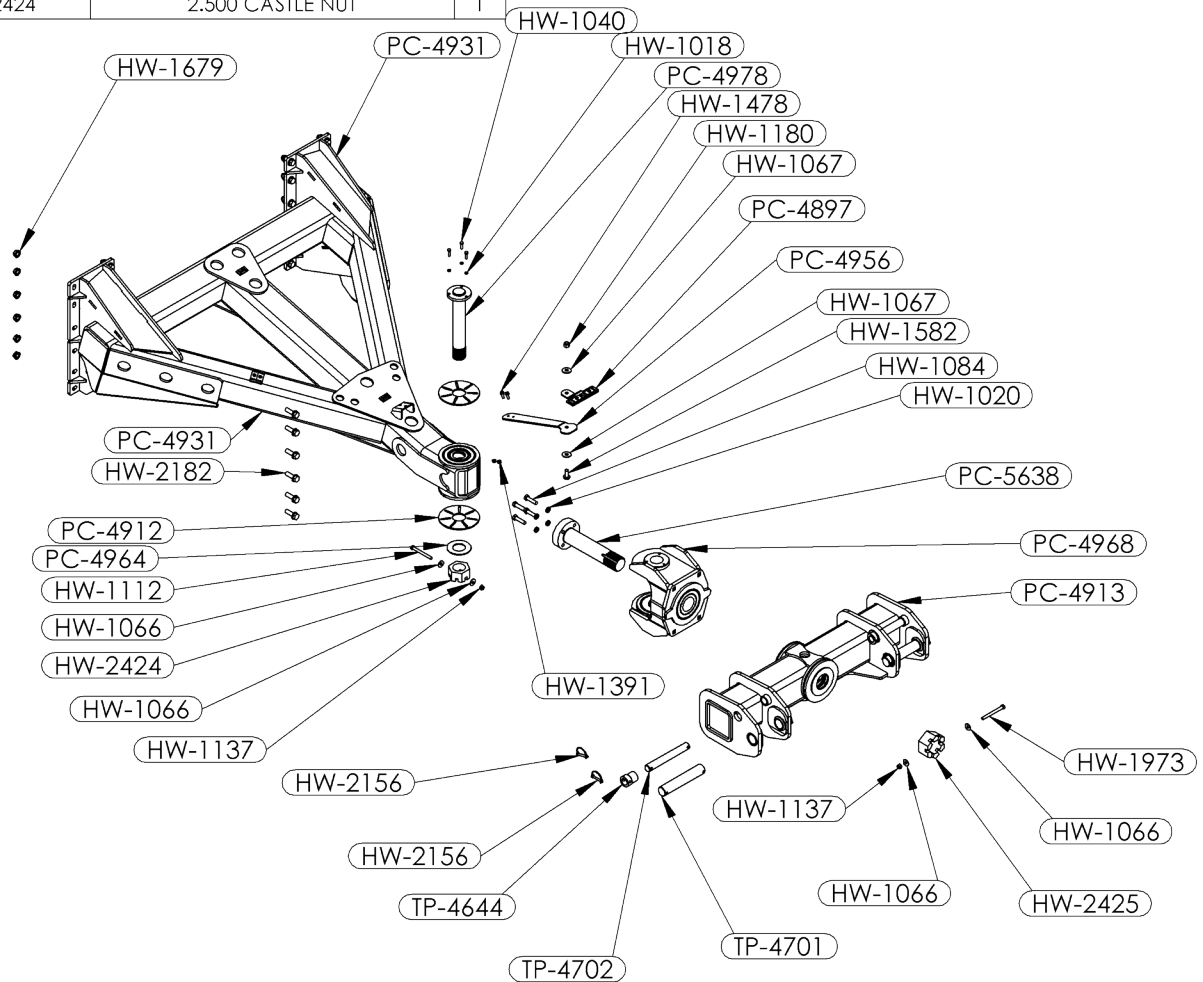
## PC-4538A

PART NUMBER	DESCRIPTION	QTY.
HW-1075	3/4" X 7" X 7" U-BOLT, NC, PLATED	2
HW-1177	3/4"-10 X 10" GR5 ZF HCS	4
HW-1679	3/4" NC NUT, SERRATED FLANGE	14
HW-1774	5/8"-11 X 13" GR5 ZF HCS	4
HW-1891	5/8"-11 ZF SERRATED FN	4
HW-2182	3/4"-10 X 2-1/4" HH GR8 POF FB	6
PC-4176	BOLT PLATE	1
PC-4231	REAR BAR MOUNT BRACKET	1



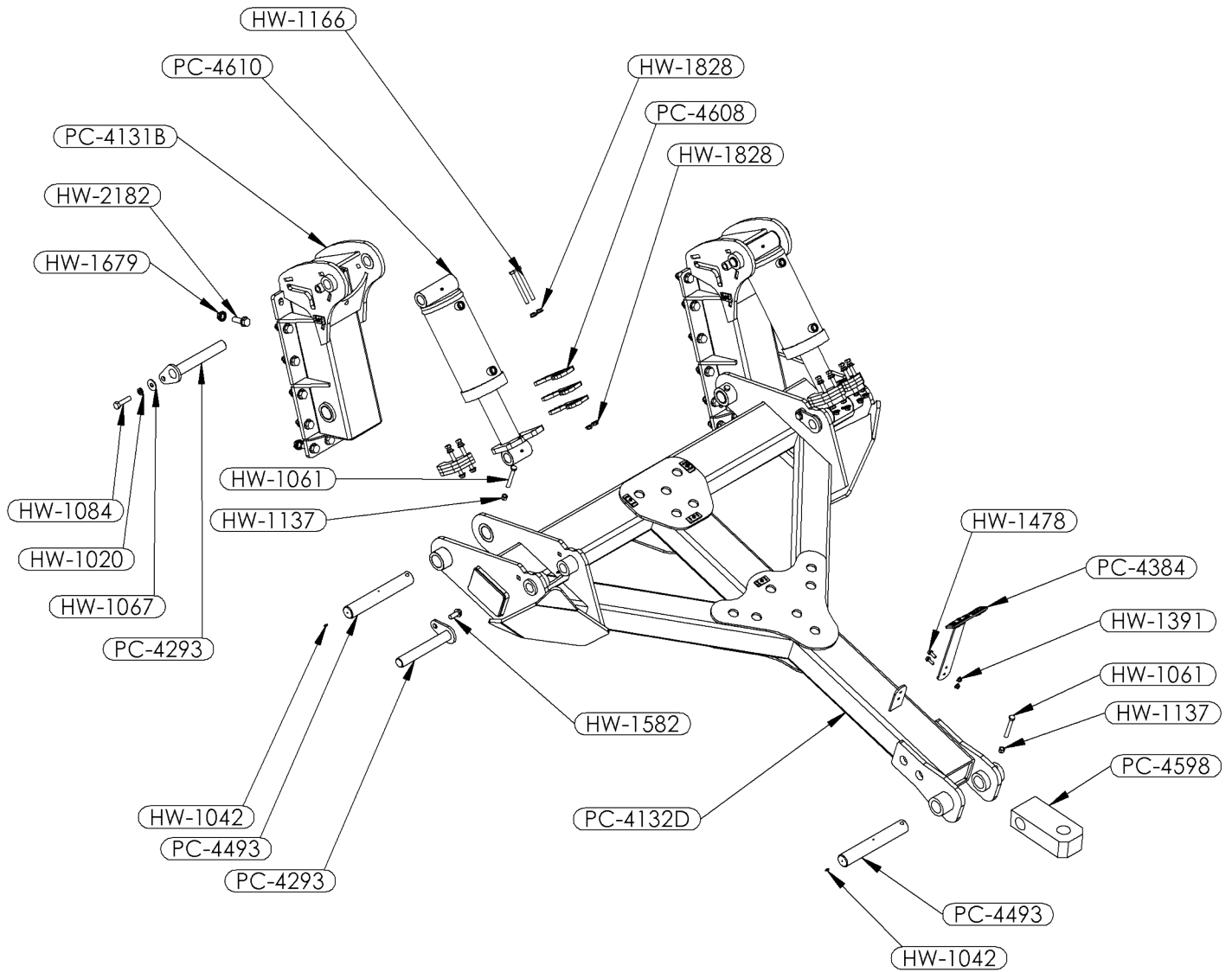
## PC-4910A

PART NUMBER	DESCRIPTION	QTY.	PART NUMBER	DESCRIPTION	QTY.
HW-1018	LOCK WASHER, 3/8"	3	HW-2425	3.000 INCH CASTLE NUT	1
HW-1020	LOCK WASHER, 5/8"	4	PC-4897	HOSE KEEPER STAND W/ HHK BASES	1
HW-1040	3/8"-16 X 1-1/4" GR5 ZF HCS	3	PC-4912	THRUST WASHER, T-1, 2.5" CENTER	2
HW-1066	FLAT WASHER, 1/2"	4	PC-4913	2PT HITCH: TEETER TOTTER WELDMENT	1
HW-1067	FLAT WASHER, 5/8"	2	PC-4927	THRUST PLATE	1
HW-1084	5/8"-11 X 2-1/2" GR5 ZF HCS	4	PC-4931	2PT CADDY HITCH	1
HW-1112	1/2"-13 X 5.0" GR5 ZF HCS	1	PC-4956	HHK STAND PLATE	1
HW-1137	1/2"-13 GR2 ZF NYLON INSERT LN	2	PC-4964	LARGE NUT WASHER, 2.5"	1
HW-1180	5/8"-11 GR2 ZF NYLON INSERT LN	1	PC-4965	THRUST WASHER, T-1, 3" CENTER	2
HW-1391	3/8"-16 ZF HARDENED SFN	2	PC-4966	LARGE NUT WASHER, 3"	1
HW-1478	3/8"-16 X 1" HH ZF SFB	2	PC-4968	YOKE WELDMENT	1
HW-1582	5/8"-11 X 1-1/2" HH ZF SS FB	1	PC-4978	VERTICAL PIVOT PIN WELDMENT	1
HW-1679	3/4" NC NUT, SERRATED FLANGE	28	PC-5638	PIN, LOWER ROCKER SOLID	1
HW-1973	1/2"-13 X 5-1/2" GR5 ZF HCS	1	TP-4644	3PT BUSHING (CAT 3-4 SYSTEM)	4
HW-2156	SNAP PIN 3/8" X 2 1/4" (3PT)	8	TP-4701	CAT 4 BOTTOM 3 POINT PIN	2
HW-2182	3/4"-10 X 2-1/4" HH GR8 POF FB	28	TP-4702	CAT 3 BOTTOM 3PT PIN	2
HW-2424	2.500 CASTLE NUT	1			



## PC-4100B

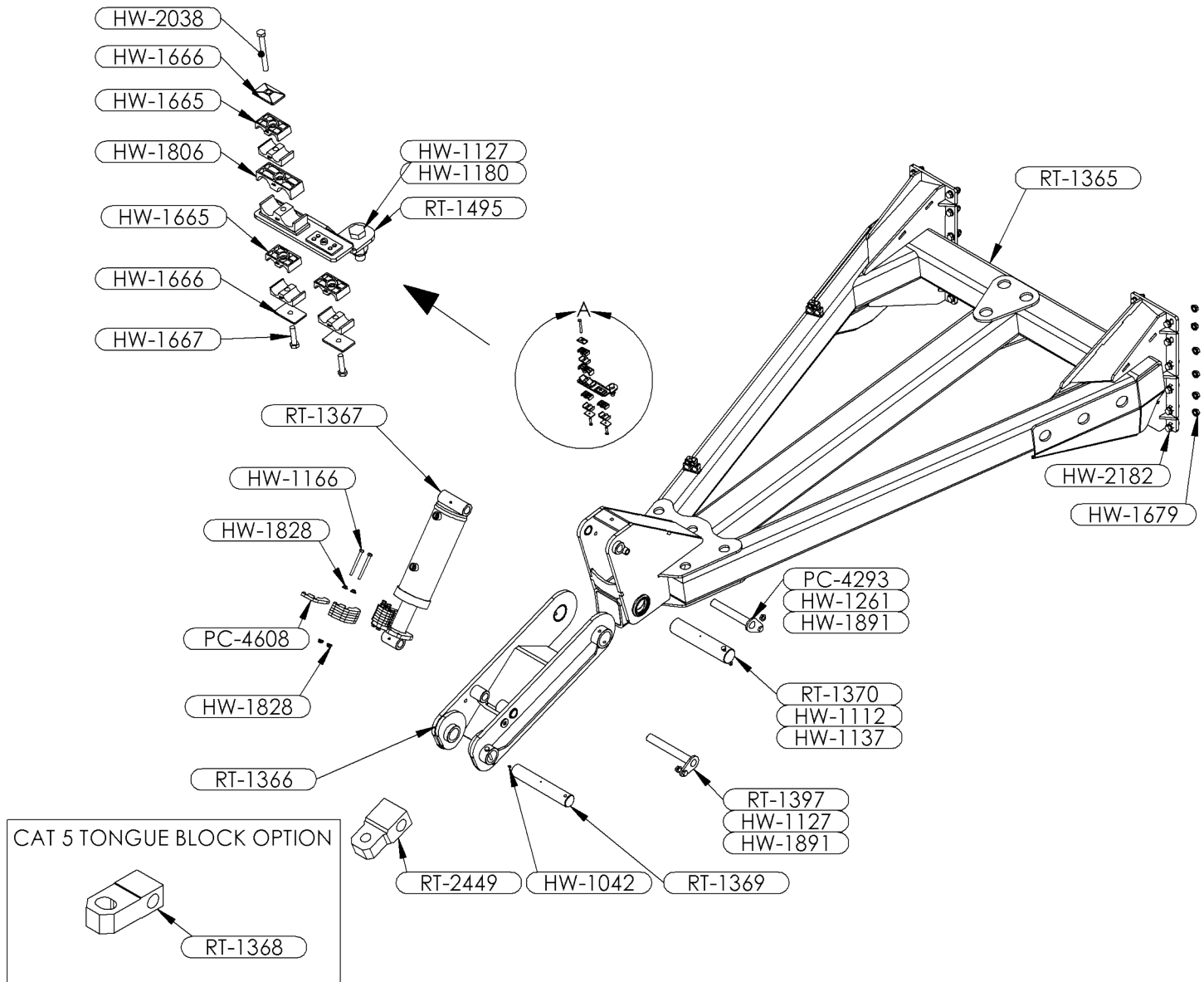
PART NUMBER	DESCRIPTION	QTY.	PART NUMBER	DESCRIPTION	QTY.
HW-1020	LOCK WASHER, 5/8"	2	HW-1828	1/2"-13 ZF SERRATED FN	20
HW-1042	ZERK, 1/4-28, STRAIGHT	5	HW-2182	3/4"-10 X 2-1/4" HH GR8 POF FB	28
HW-1061	1/2"-13 X 4" GR5 ZF HCS	3	PC-4131B	WELDMENT: VERTICAL HITCH TUBE / CYL MOUNT	2
HW-1067	FLAT WASHER, 5/8"	2	PC-4132D	WELDMENT: HYD HITCH MAIN FRAME (60")	1
HW-1084	5/8"-11 X 2-1/2" GR5 ZF HCS	2	PC-4293	WELDMENT: CYLINDER MOUNT PINS	4
HW-1137	1/2"-13 GR2 ZF NYLON INSERT LN	3	PC-4384	HOSE KEEPER STAND W/ HHK BASES	1
HW-1166	1/2-13 X 5" ZF HCS GR5	8	PC-4493	LIFT FRAME PIVOT PIN	3
HW-1391	3/8"-16 ZF HARDENED SFN	2	PC-4598	CAT 4 TONGUE BLOCK	1
HW-1478	3/8"-16 X 1" HH ZF SFB	2	PC-4608	CYL STOP SPACER, 1/2"	12
HW-1582	5/8"-11 X 1-1/2" HH ZF SS FB	2	PC-4610	HW-1861 CYL W/ CYL STOP MNT PLATES	2
HW-1679	3/4" NC NUT, SERRATED FLANGE	28			





**RT-1364**

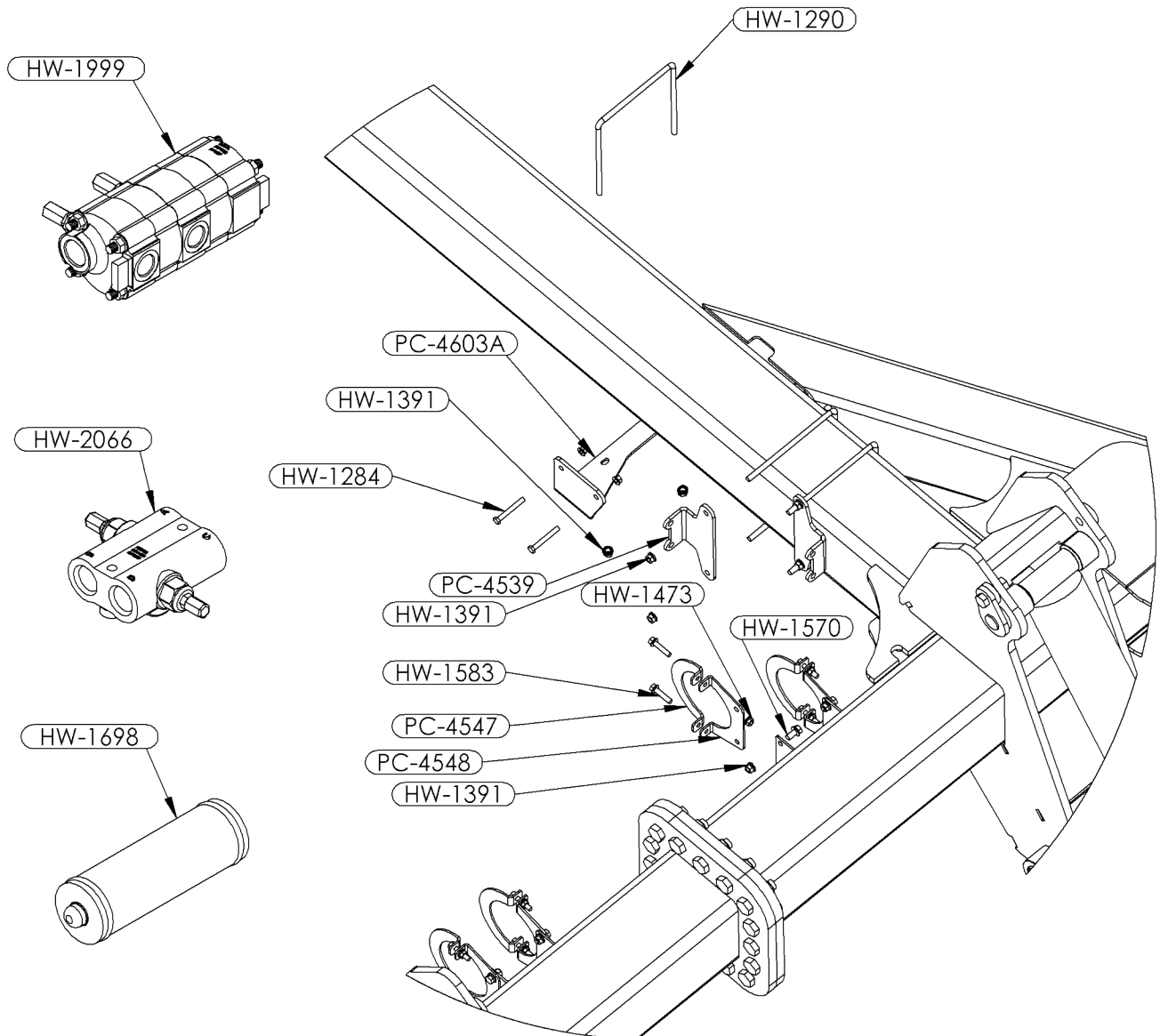
PART NUMBER	DESCRIPTION	QTY.	PART NUMBER	DESCRIPTION	QTY.
HW-1042	ZERK, 1/4-28, STRAIGHT	2	HW-1891	5/8"-11 ZF SERRATED FN	2
HW-1112	1/2"-13 X 5.0" GR5 ZF HCS	1	HW-2038	5/16"-18 X 3" GR5 ZF HCS	3
HW-1119	1/2"-13 X 4-1/2" GR5 ZF HCS	1	HW-2182	3/4"-10 X 2-1/4" HH GR8 POF FB	28
HW-1127	5/8-11 " X 2" GR5 ZF HCS	2	PC-4293	WELDMENT: CYLINDER MOUNT PINS	1
HW-1137	1/2"-13 GR2 ZF NYLON INSERT LN	2	PC-4608	CYL STOP SPACER, 1/2"	12
HW-1166	1/2-13 X 5" ZF HCS GR5	4	RT-1365	MAIN FRAME WLDMT	1
HW-1180	5/8"-11 GR2 ZF NYLON INSERT LN	1	RT-1366	HITCH PIVOT ARM	1
HW-1261	5/8"-11 X 3" GR5 ZF HCS	1	RT-1367	CYL W/ CYL STOP MNT PLATES	1
HW-1665	3/8" HHK PLASTIC PART	10	RT-1369	LIFT FRAME PIVOT PIN	1
HW-1666	1/4", 3/8" HHK TOP	5	RT-1370	LIFT FRAME PIVOT PIN	1
HW-1667	1/4", 3/8" HHK BOLT	2	RT-1397	WELDMENT: CYLINDER MOUNT PINS	1
HW-1679	3/4" NC NUT, SERRATED FLANGE	28	RT-1495	HOSE KEEPER STAND W/ HHK BASES	1
HW-1806	3/4" HHK PLASTIC PART	6	RT-2449	CAT 4 TONGUE BLOCK	1
HW-1828	1/2"-13 ZF SERRATED FN	8			





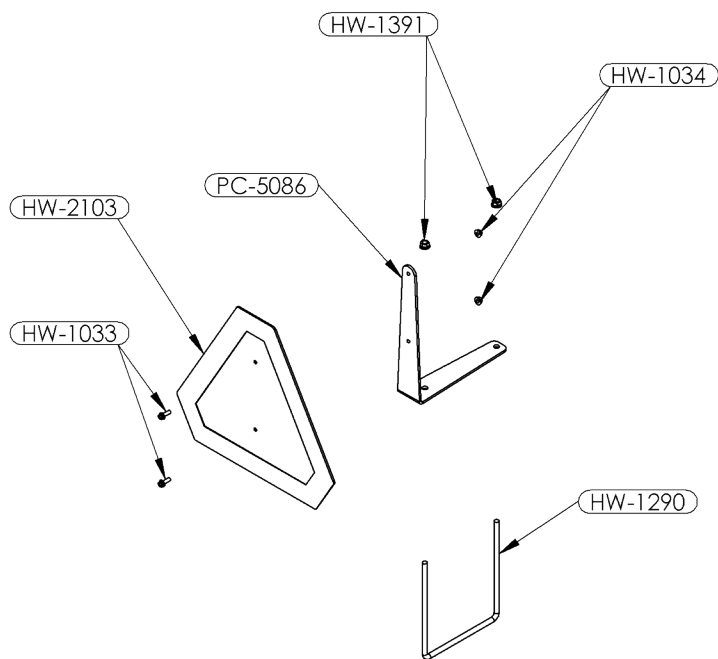
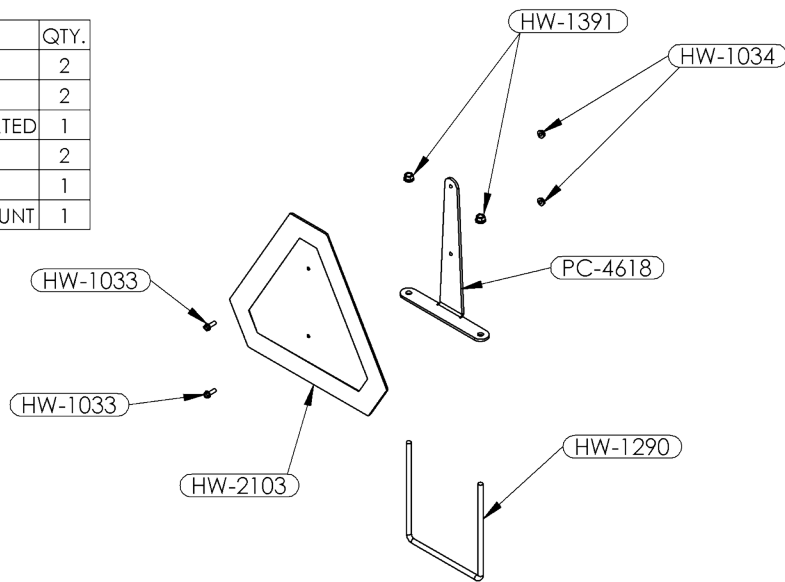
## PC-4600 HYD COMPONENTS AND BRACKETS

PART NUMBER	DESCRIPTION	QTY.
HW-1284	5/16"-18 X 2-1/2" GR5 ZF HCS	2
HW-1290	3/8" X 7" X 7" U-BOLT, NC, PLATED	4
HW-1391	3/8"-16 ZF HARDENED SFN	16
HW-1473	5/16"-18 ZF SFN	10
HW-1570	3/8"-16 X 3/4" HH ZF SS FB	8
HW-1583	5/16"-18 X 1-1/2" HH ZF SS FB	8
HW-1698	HYD ACCUMULATOR, 1/2GL, 1500#	2
HW-1999	FLOW DIVIDER	1
HW-2066	RELIEF VALVE, DIFF POP, SAE 12	1
PC-4539	DELTA POWER FLOW DIVIDER MOUNT BRACKET	2
PC-4547	ACUM TOP CLAMP "C" PLATE	4
PC-4548	ACCUMULATOR HOLDER	4
PC-4603A	DIFF. POPPET RELIEF VALVE MOUNT	1



## SLOW MOVING SIGN

PART NUMBER	DESCRIPTION	QTY.
HW-1033	1/4"-20 X 3/4" HH ZF SFB	2
HW-1034	1/4"-20 ZF SFN	2
HW-1290	3/8" X 7" X 7" U-BOLT, NC, PLATED	1
HW-1391	3/8"-16 ZF HARDENED SFN	2
HW-2103	SLOW MOVING	1
PC-4618	SLOW MOVING EMBLEM MOUNT	1



PART NUMBER	DESCRIPTION	QTY.
HW-1033	1/4"-20 X 3/4" HH ZF SFB	2
HW-1034	1/4"-20 ZF SFN	2
HW-1290	3/8" X 7" X 7" U-BOLT, NC, PLATED	1
HW-1391	3/8"-16 ZF HARDENED SFN	2
HW-2103	SLOW MOVING	1
PC-5086	SLOW MOVING EMBLEM MOUNT	1

# **PREPARATION AND STORAGE**

## **PRE-SEASON**

- Review safety precautions in this manual.
- Check the machine over for material defects and cracks, especially near weld joints. If there are any faults, repair or replace parts before operating the machine.
- Check all bearings on the flat coulter and replace if not in good operating condition.
- Check all bolts, nuts, lock washers, flat washers, roll pins, cotter pins, etc. for being worn, loose or cracked. Replace or tighten as needed.

## **POST-SEASON**

- Remove any trash and debris from machine.
- Wash all soil and excess debris that has accumulated on the machine with pressurized water if available.
- Remove all rust and repaint areas where paint has been removed.
- Make list of parts that need replacing for next use and order them early.
- Make any needed repairs and replace any damaged or worn parts.

[illegible]

